

OECOS

Oceanic-Ecodynamics Comparison in the Subarctic Pacific

An East-West Comparative Study of Lower Trophic Level Pelagic Ecology in the Subarctic Pacific Ocean- a PICES Project

PICES workshop discusses Oceanic Ecodynamics COmparison in the Subarctic Pacific (OECOS) - a project proposal

Charles B. Miller (right)
Oregon State University
104 Ocean Administration Building,
Corvallis, OR 97331-5503
U.S.A.
E-mail: cm@coas.oregonstate.edu

Tsutomu Ikeda (left)
Hokkaido University
3-1-1 Minato-cho,
Hakodate, Hokkaido,
Japan. 041-8611
E-mail: tom@pop.fish.hokudai.ac.jp



Workshop organizers, Drs. Ikeda and Miller, with rooster-hat death mask.

PICES Press Vol. 13 (2005)

OECS WEST: activities

2004

- June:** OECS planned by C.B. Miller and T. Ikeda
- October:** OECS was endorsed as a PICES program (13th PICES Annual meeting in Hawaii)

2005

- March:** WEST symposium “Progress and future perspective of biological oceanography in the subarctic Pacific” (Tokyo Ocean University)
- May:** 2-day OECS Workshop (Oregon State University)
- December:** WEST symposium “Future perspective of the study on marine ecosystem dynamics” (ORI of University of Tokyo)

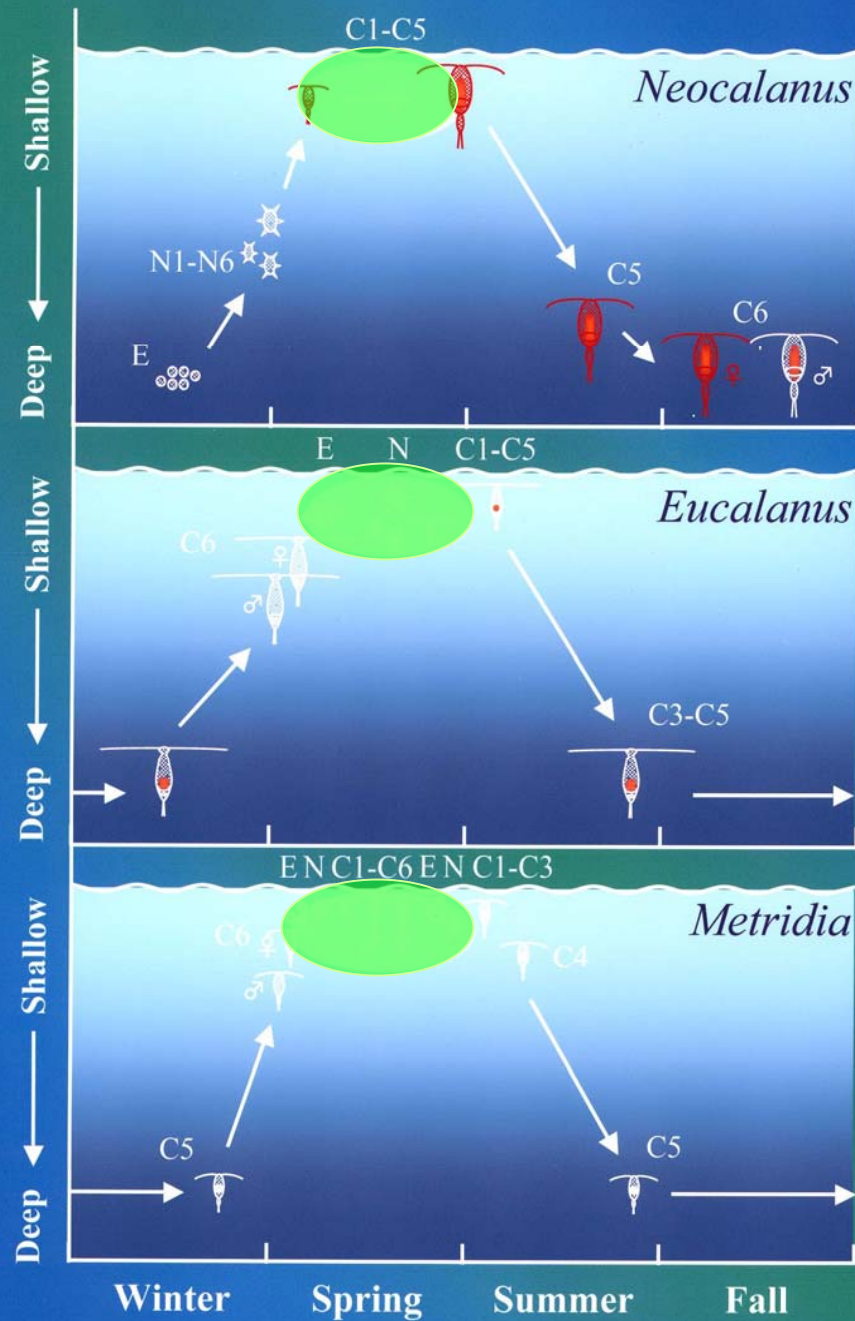
2007

- March:** OECS-WEST cruise (T/S *Oshoro-Maru*) 21 participants
- April-May:** OECS-WEST cruise (R/V *Hakuho-Maru*) 26 participants
- September:** WEST workshop (Kagoshima University)

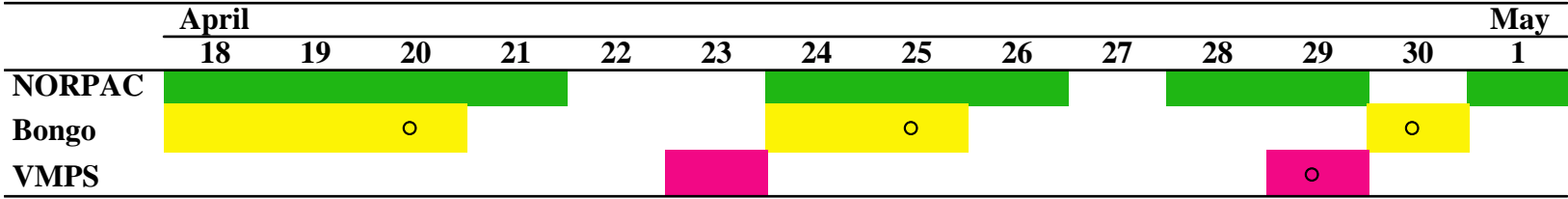
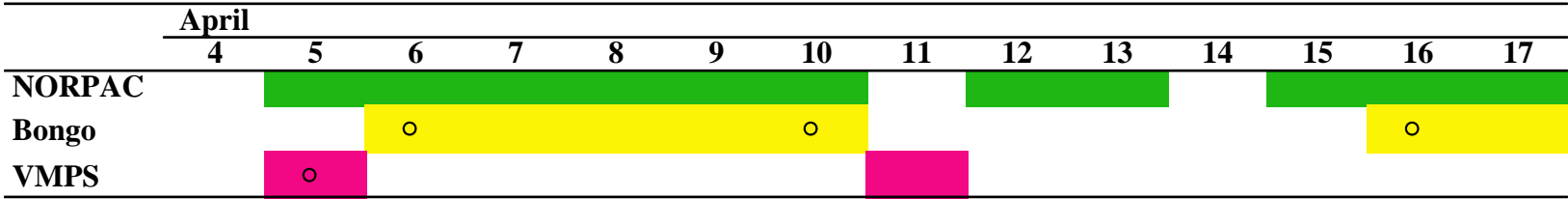
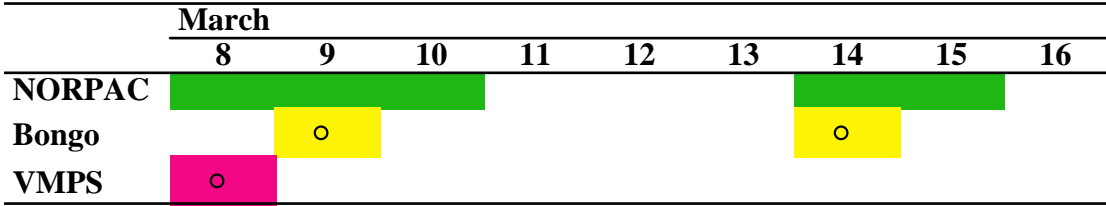
2008

- March:** WEST symposium “The Oyashio ecosystem dynamics as studied by high frequency sampling” (Tokyo Ocean University)
- August:** WEST symposium “Effects of water mass changes on high frequency sampling” (ORI of University of Tokyo)

Life cycle schema



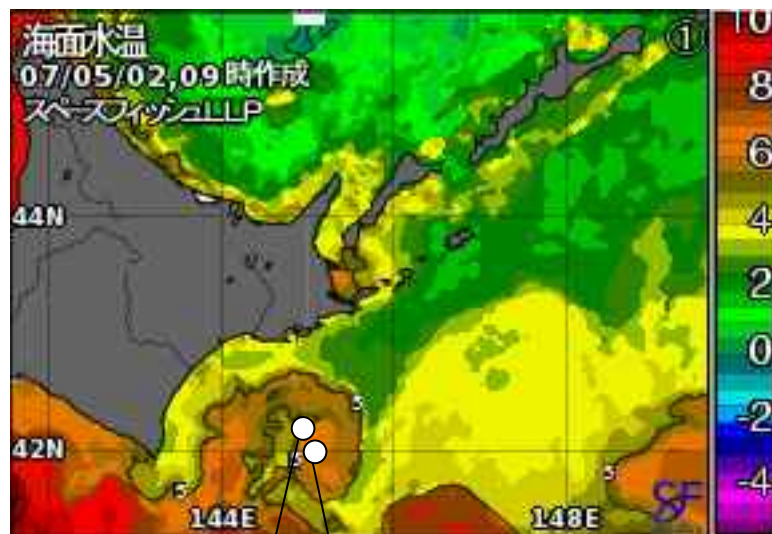
Zooplankton samplings during OECOS



	Number	D/N	Series
NORPAC	32	D/N	64
Bongo	19	N	19
VMPS	5	D/N	10

Satellite images during OECOS

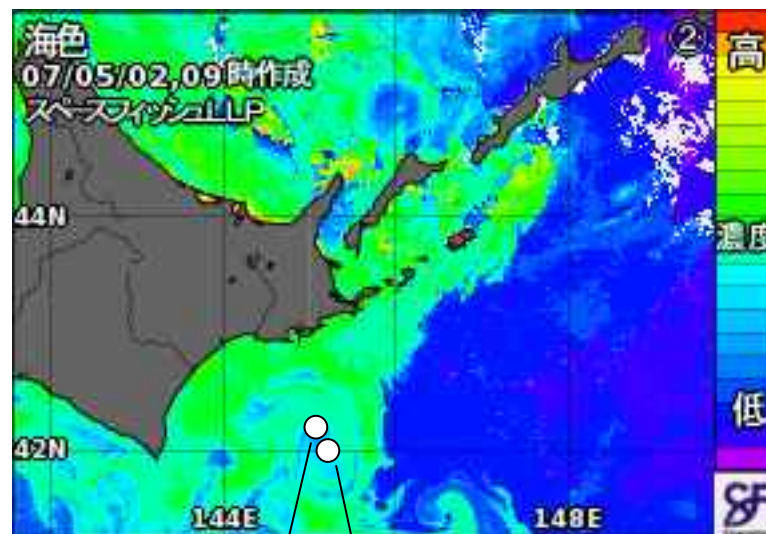
Temperature (°C)



A-4

A-5

Chlorophyll



A-4

A-5

A-line (A-5: 42°00'N, 145°15'E; A-4: 42°15'N, 145.07'E)

Warm Water Eddy was present at the stations

Chlorophyll peaked on 9 April.

T/S *Oshoro-Maru* (Hokkaido University)



R/V *Hakuho-Maru* (JAMSTEC)



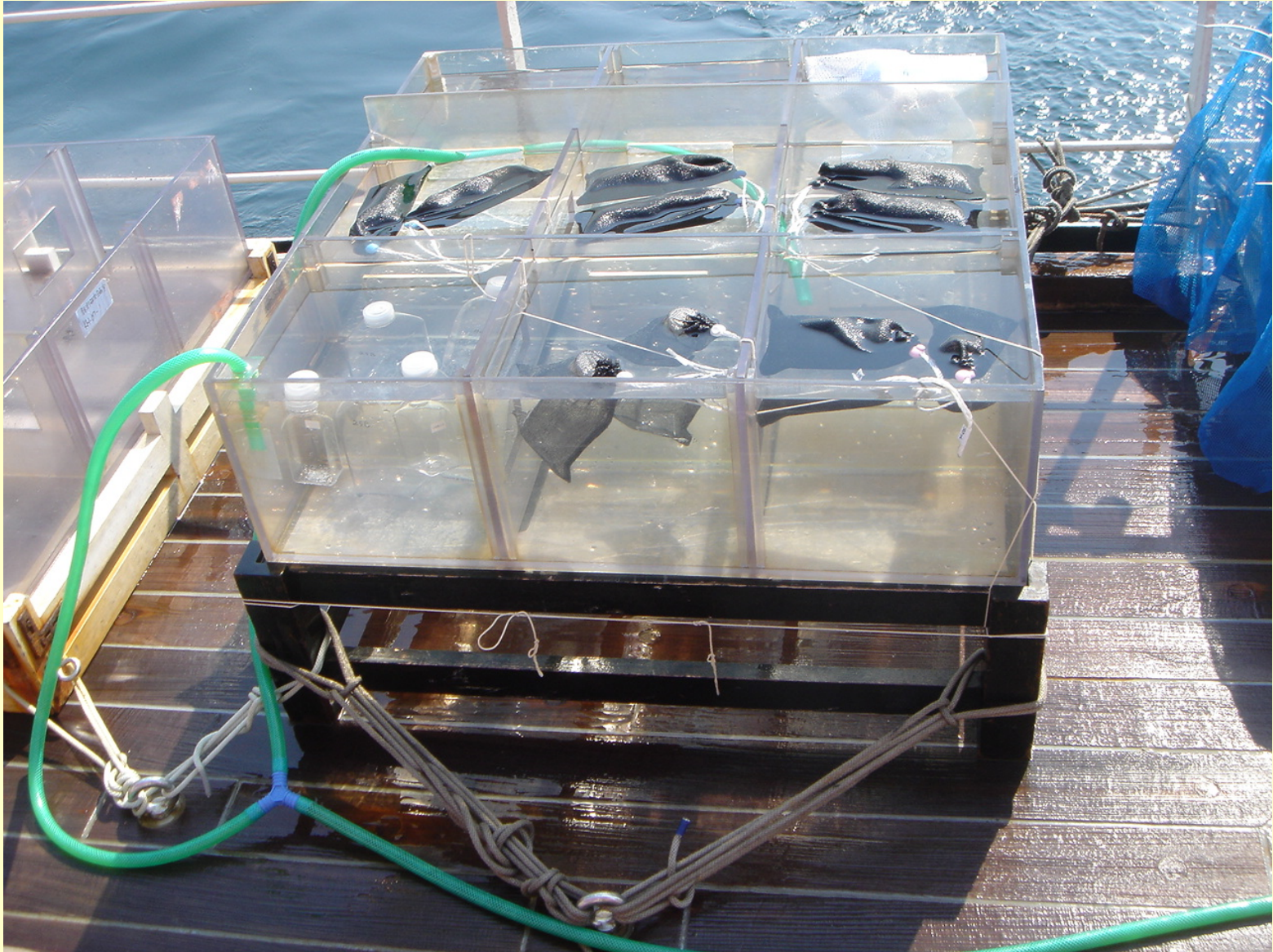
CTD cast



NORPAC net



Deck incubation



Midwater Frame Trawl



Drifting sediment trap





Group photo:
Participants of the *Hakuho Maru* cruise

OECON-WEST Workshop, Faculty of Fisheries, Kagoshima University, 29 - 30 September 2007

09:00 ~ 09:10: T. Kobari Opening remarks

09:10 ~ 09:30: T. Ikeda* OECOS-WEST activities (review)

09:30 ~ 10:00: T. Kono* Water mass structure and its variation as revealed by the sequential observations off southeast Hokkaido

10:00 ~ 10:30: M.Sato* and T. Kono Physiological status of phytoplankton during a spring bloom in the Oyashio region

10:30 ~ 10:50: Tea Break

10:50 ~ 11:20: K. Sugie*, K. Kuma and S. Fujita Vegetative growth of in situ phytoplankton by intracellularly stored iron before and during spring bloom in the Oyashio region.

11:20 ~ 11:50: T. Isada*, A. Hattori and K. Suzuki Community structure and photosynthetic physiology of phytoplankton in the Oyashio region of the NW subarctic Pacific during spring 2007

12:50 ~ 12:20: M. Sato*, T. Kodama and K. Furuya Physiological status of phytoplankton during a spring bloom in the Oyashio region

12:20 ~ 14:00: Lunch

14:00 ~ 14:30: T. Ota*, T. Kobari, M. Ishinomiya, Y. Gomi and K. Oikawa Grazing activity of microzooplankton during diatom bloom in the Oyashio region

14:30 ~ 15:00: M. Ichinomiya*, Y. Gomi, M. Nakamachi, T. Ota and T. Kobari Use of PDMPO fluorescent dye for identification of significant siliceous phytoplankton and biological process for Si uptake in the Oyashio region

15:00 ~ 15:30: A. Yamaguchi*, A. Omata, M. Kaneda, M. Kawai and T. Ikeda Succession of mesozooplankton biomass and egg production, gut pigment and body mass of dominant calanoid copepods during the phytoplankton bloom season in the Oyashio region

15:30 ~ 15:50: Tea Break

15:50 ~ 16:20: T. Ikeda* and H. Kim Metabolism and body composition of some mesozooplankton as influenced by the spring phytoplankton bloom in the Oyashio region

16:20 ~ 16:50: T. Kobari*, A. Ueda, Y. Nishibe, Y. Inoue, H. Okamura, Y. Nakamura and K. Mitsui Feeding and development of interzonally migrating copepods during phytoplankton bloom in the Oyashio region, western subarctic Pacific

16:50 ~ 17:20: Y. Nishibe*, T. Kobari and A. Ueda Abundance and egg production of the cyclopoid copepod *Oithona similis* in the Oyashio region during spring

17:20 ~ 17:50: T. Fujino*, Y. Ito and K. Miyashita Abundance and distribution of micronektonic mesopelagic fish at the 2007 OECOS observation site (Northwest Pacific)

18:00: Close

Plan for 2008 and beyond (30 September, Sunday)

09:00 ~ 10:50: Discussion

Data forthcoming, collaborations, future directions etc.

10:50 ~ 11:10: Tea Break

11:10 ~ 12:30: Adoption of the proposal (description, proposal) for OECOS- Workshop during 2008 PICES Annual Meeting (to be presented by 2007 PICES annual meeting)

Presentations for the Spring Meeting of Japan Society of Oceanography, March 2008

12:30: Close

2008

March: WEST symposium “The Oyashio ecosystem dynamics as studied by high frequency sampling” (Tokyo Ocean University)

August: WEST symposium “Effects of water mass changes on high frequency sampling” (ORI of University of Tokyo)